
BOOT Party Leadership Structure Policy

– Ward Leadership Structure (WLS)

Brilliant Basics

(Check the complete policy for details. You may request for the complete Policy by sending email request to: becausefourtomorrow@boot.org.ng)



Effective from: **01 February 2020**

Disclosure Level: **Public**

All BOOT Party Policy, Standard and Guidelines are copyrighted. © 2020. No part can be reproduced in any form without specific written consent from BOOT Party, Nigeria and copyright holder(s).

All rights reserved worldwide.

Contents

1.	General	3
2.	Scope.....	3
3.	Purpose.....	3
4.	Aims	3
	Fig.1: BOOT Party Political Leadership System Structure (BOOT-PPLSS)	4
5.	Glossary	4
6.	Ward Leadership Structure	4
	Fig.2: Create BOOT Party Ward Flow Diagram	5
6.1	How to Create a BOOT Party Ward?.....	6
6.2	Ward Leadership and Elections	6
6.3	Ward Leadership and Duties.....	7
6.4	Ward Leadership Tenure.....	7
6.5	Ward Office and Meeting Location.....	7
6.6	Maintenance of Full Ward Status	7
6.7	Finance and Bank Account	8
6.8	Membership Drive.....	8
6.9	Withdrawal of Full Ward Status	8
6.10	Disciplinary & Removal from Office	8
6.11	Benefits of Full Ward Status (FWS).....	8
6.12	Ward Rulebook.....	9
6.13	Unauthorised Commitment	9
7.	Review	9
8.	Policy owner	9
9.	Reference (s).....	9
10.	Revision History.....	9

1. General

BOOT Party will be the best political party in Nigeria to join. You can join the [BOOT Party](#) quickly, easily and safely online on www.BOOT.org.ng/join-us or on BOOT Party app.

When you become a member, you will get a vote in our next party leadership elections including, Ward, Local Government, State and National level.

[BOOT](#) Party keeps membership very confidential except for members in BOOT Party's public facing positions; so feel free to join us.

The [BOOT](#) Party is a cooperative-like political party registered by INEC in 2019 - <https://www.inecnigeria.org/party/boot-party/>. We are a political party thinking beyond ourselves, **Because Of Our Tomorrow (BOOT)**.

2. Scope

We consider our members a part of BOOT Party's organisation. This policy applies to all [BOOT](#) Party members at all levels of leadership positions within BOOT Party.

3. Purpose

We are so glad you could join our leadership pathway. This policy provides the specific requirements that must be implemented and consistently maintained for leadership on-boarding in order to comply with [BOOT](#) Party's Constitution.

4. Aims

BOOT Party is an ultra-transparent political party. This policy will help BOOT Party members to know the BOOT Party Political Leadership System Structure (BOOT-PPLSS) and its formation at all levels including Ward; Local Government Area; State and National.

This policy is central to the goal of the BOOT Party, which is to develop Nigeria and its people. The BOOT Party leadership structure is BOTTOM-UP democratic leadership system designed to seamlessly and naturally bring government and governance near the grass root enabling quick access to the dividends of democracy.

Leaders and councils will be constituted at each of these levels of BOOT Party's PLSS:

- i. WLS - Ward Leadership Structure;

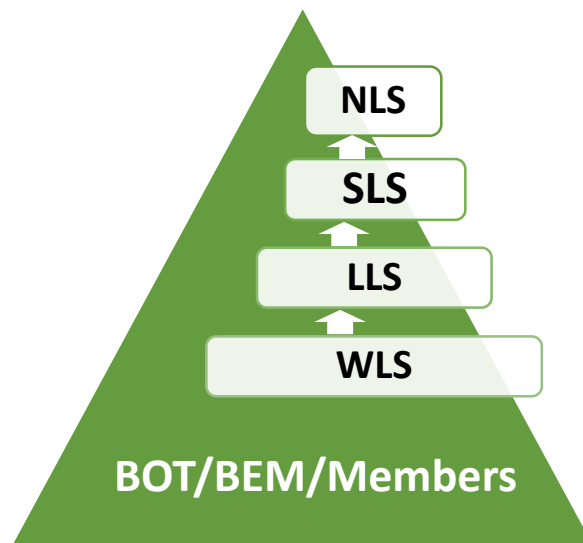


Fig.1: BOOT Party Political Leadership System Structure (BOOT-PPLSS)

- ii. LLS - Local Leadership Structure;
- iii. SLS - State Leadership Structure;
- iv. NLS - National Leadership Structure;
- v. BOT - Board of Trustees; and
- vi. BEM - BOOT Party Elected Members.

These leadership structures are interconnected and hierarchical. The WLS is where most BOOT Party members will join the leadership structure through to NLS. A BOOT Party member is expected to have at least attained the preceding leadership structure of the leadership level they intend to join.

5. Glossary

The brilliant basics is the summarised copy of the policy.

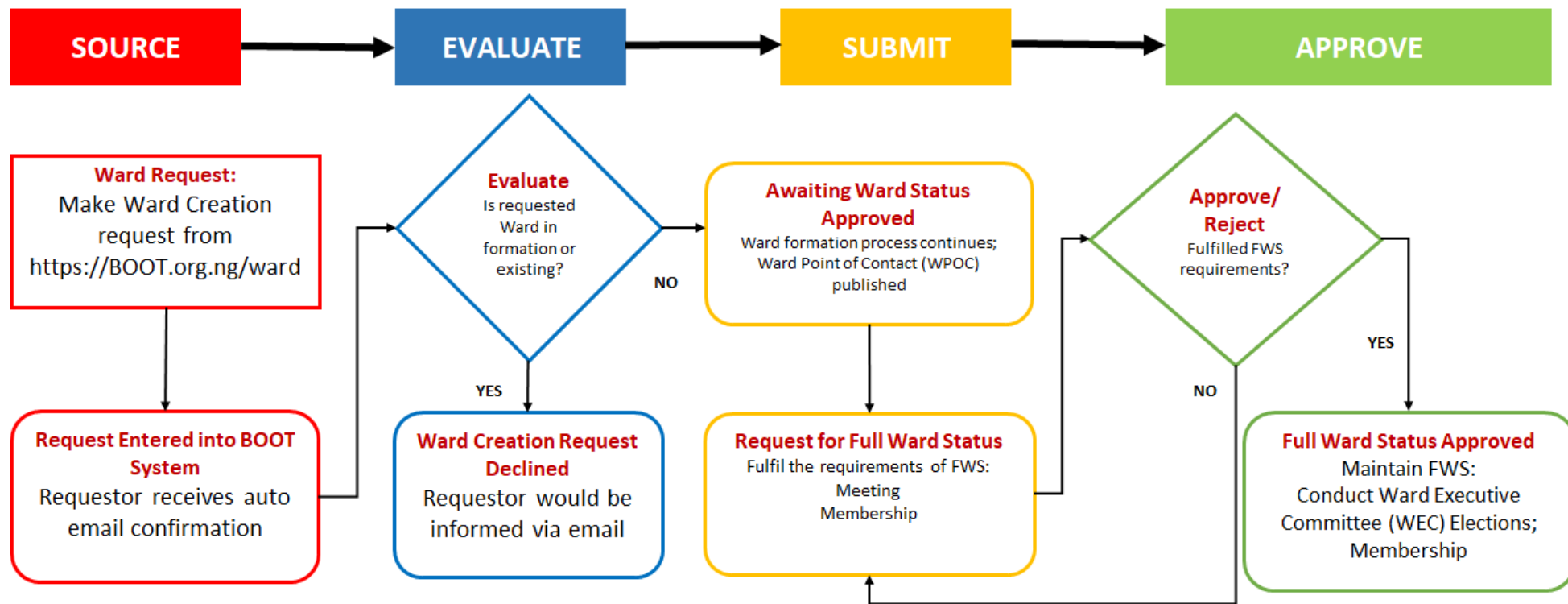
Check the complete policy for details.

6. Ward Leadership Structure

The Ward level is the entry level of the BOOT Party Political Leadership System Structure (BOOT-PPLSS). By default, every registered BOOT Party member is a member of a Ward, Local Government Area and State based on their registration.

Wards as listed by INEC will be used or as determined by the NEC.

Create BOOT Party Ward Flow Diagram



01 Feb 2020 - Version 3

Fig.2: Create BOOT Party Ward Flow Diagram

6.1 How to Create a BOOT Party Ward?

The following guidelines and criteria will need to be followed and fulfilled to establish a BOOT Party Ward:

1. Create Ward from <https://BOOT.org.ng/ward>. An automatic email response will be sent to confirm the start of the Ward Creation. The main condition for approval will be if the identified Ward is not yet in formation or already in existence. In addition, the personal character of the requestor will also be considered before approval or rejection.
2. The requestor will be regarded as the Ward Point of Contact (WPOC) with the BOOT Party National Secretariat.
3. If approved, another email will convey the process of formation of the Ward, with Awaiting Ward Status (AWS) and the BOOT Party will provide support in area of documentation to start the Ward.
4. A Ward in formation with AWS status will have a maximum of forty-five (45) days to gain Full Ward Status (FWS) after which the Awaiting Ward Status (AWS) will be withdrawn.
5. A Ward in formation with AWS status can only gain Full Ward Status after fulfilling the following requirements:
 - i. Must have at least twenty (20) registered members of which at least twelve (12) must have had their membership confirmed in the BOOT Party members' national database.
 - ii. **Check the complete policy for details of this policy.**

6.2 Ward Leadership and Elections

1. Each Ward is expected to have at least three (3) executive positions and at most seven (7) executive positions including:
 - i. Ward Chairman (WC) - **Compulsory;**
 - ii. Ward Secretary (WS) - **Compulsory;**
 - iii. Ward Financial Secretary (WFS) - **Compulsory.**
 - iv. **Check the complete policy for details of this policy.**
2. Ward Executive Council (WEC) members may be increased base on the commitment and need of the Ward. The National Secretariat will provide details of this requirements.

Check the complete policy for details of this policy.

6.3 Ward Leadership and Duties

1. Ward Chairman (WC):

- i. He/she shall be the Ward chairperson and leader of the BOOT Party at the Ward and shall preside over Ward meetings including Ward Executive Committee (WEC).

ii. **Check the complete policy for details of this policy.**

2. Ward Secretary (WS):

- i. He/she shall direct and execute all administrative and Secretarial functions of the Ward and WEC.

ii. **Check the complete policy for details of this policy.**

3. Ward Financial Secretary (WFS):

- i. He/she shall direct all fund mobilisation efforts of the Ward.

ii. **Check the complete policy for details of this policy.**

6.4 Ward Leadership Tenure

- i. The tenure of all Ward Executive Committee (WEC) will be two (2) years.

ii. **Check the complete policy for details of this policy.**

6.5 Ward Office and Meeting Location

- i. Ward meetings shall be held at the BOOT Party Local Secretariat and Virtual Online Meeting (VOM).

ii. **Check the complete policy for details of this policy.**

6.6 Maintenance of Full Ward Status

Check the complete policy for details of this policy.

6.7 Finance and Bank Account

Check the complete policy for details of this policy.

6.8 Membership Drive

Check the complete policy for details of this policy.

6.9 Withdrawal of Full Ward Status

A ward's Full Ward Status may be withdrawn if the Ward's activities or its executives violate the constitution of BOOT Party, any of its policy and its guidelines.

Check the complete policy for details of this policy.

6.10 Disciplinary & Removal from Office

Any WEC member of the Party may be removed from office whenever found to have committed any of the offences listed in Article 19 of the BOOT Party's constitution.

Check the complete policy for details of this policy.

6.11 Benefits of Full Ward Status (FWS)

- i. Access to affordable Ward programs and information exchange through regular Ward meetings and events.
- ii. Network with thousands of OTHER Wards all over Nigeria.
- iii. Ward and WEC members are positioned for leadership. BOOT Party allows members to practice leadership skills through its Wards and its Local Government, State and National executives and committees. The BOOT Party-sponsored Leadership Elevation and Adjustment Programme (LEAP) offer Ward members and leaders the opportunity to learn professional skills and develop leadership and management skills.
- iv. WEC members may fulfil one of the important criteria for the eligibility to aspire and hold positions at the other tiers of the Party hierarchy (Local Government, State and National).
- v. **Check the complete policy for details of this policy.**

6.12 Ward Rulebook

- i. **Check the complete policy for details of this policy.**

6.13 Unauthorised Commitment

NO MEMBERS OF THE PARTY CAN JOINTLY OR SEVERALLY ENTER INTO ANY OBLIGATION THAT BINDS THE PARTY WITHOUT EXPRESS KNOWLEDGE AND PERMISSION FROM THE NATIONAL SECRETARIAT.

7. Review

This policy will be reviewed at least annually or at any time set by the National Executive Council.

8. Policy owner

National Chairman of BOOT Party

9. Reference (s)

<https://BOOT.org.ng/ward>

https://www.boot.org.ng/BOOT_Constitution.pdf

https://www.boot.org.ng/BOOT_Manifesto.pdf

<https://www.boot.org.ng/LEAP/>

<https://www.boot.org.ng/donate/>

10. Revision History

Change Date	Change Description	Adopted by the NEC
01-Feb-2020	Version – 3.0: 6.1.1 – https://BOOT.org.ng/ward replaced request by email 6.7.1 – Ward 1 and 2 to share 25% of dues; Nominated accounts;	09-Feb-2020
	Check the complete policy for details of this policy.	